

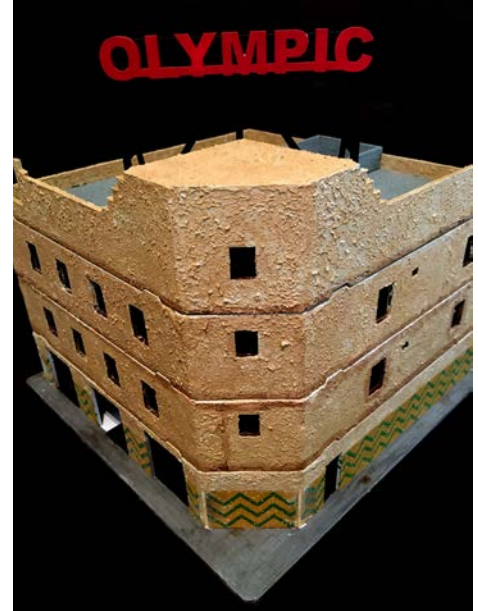
GCMINI.COM

GAMECRAFT MINIATURES

Kit number 28MMDF102
Olympic Hotel from "Blackhawk Down"
Assembly Instructions and photos

General Notes Before You Begin:

1. This is an MDF kit, MDF should be glued with yellow wood glue or standard white "school" glue.
2. The use of masking tape, rubber bands, or clamps to hold pieces together while the glue dries is highly recommended. Modeling blocks (or other squared angle) are highly advisable and make the assembly of this model relatively straight forward and more enjoyable.
3. You may choose to paint parts before assembly, this decision is up to you. If you do paint parts before assembly, be sure to avoid painting any tabs that must later fit into slots, the added thickness of the paint will make assembly difficult. Otherwise there is no reason not to paint before assembly, especially interior parts.
4. In the instructions we use the international floor nomenclature; the ground floor is the "ground floor", the first floor above that is the "first floor", the next floor up is the "second floor",,, then the "roof". (For some reason, in America, the ground floor is called the "first floor")

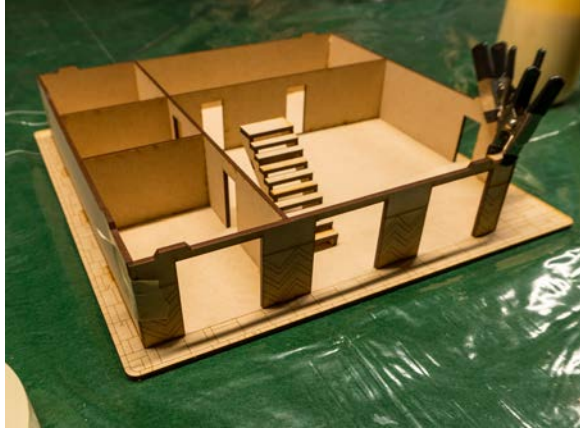


Ground Floor

1. Identify and lay out the parts for the ground floor.
2. Install the interior walls and then build the stairs. The stairs are easiest to build in place as the slots in the floor keep the sides at that correct spacing.



Step 1 and 2

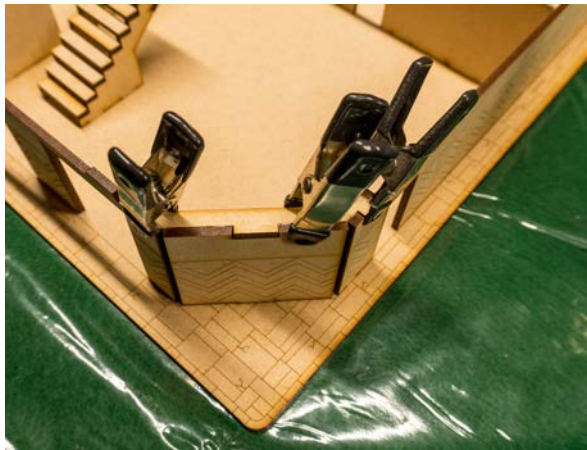


Step 3

3. Attach all exterior walls. Use masking tape or some other means to keep all pieces tightly held until the glue dries.

4. Attach the front upper corner brace. This brace will keep the three front walls in place.

The ground floor is done, move it aside.



Step 4 - Corner Brace

First Floor

5. Lay out and identify the parts for the first upper floor. Install interior walls.

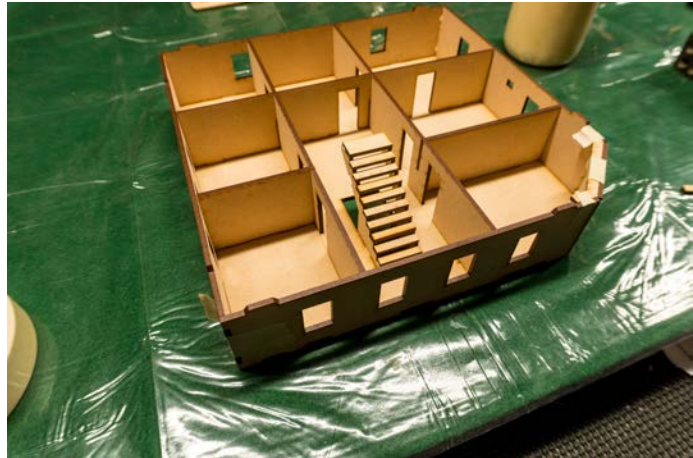


Step 5

6. Build the stairs as you did on the ground floor.

7. Assemble all outside walls as you did on the ground floor, including the corner brace piece.

The first upper floor is done, put it aside.



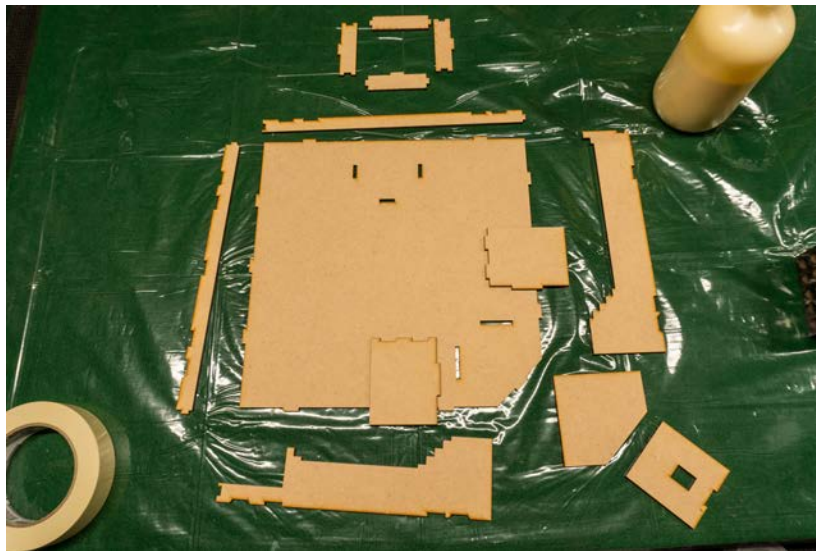
Step 6-7

Second Floor

8-9. The second upper floor assembles exactly like the first upper floor with the omission of the stairs.



Step 8-9



The Roof

10. Lay out and identify all roof parts

Step 10



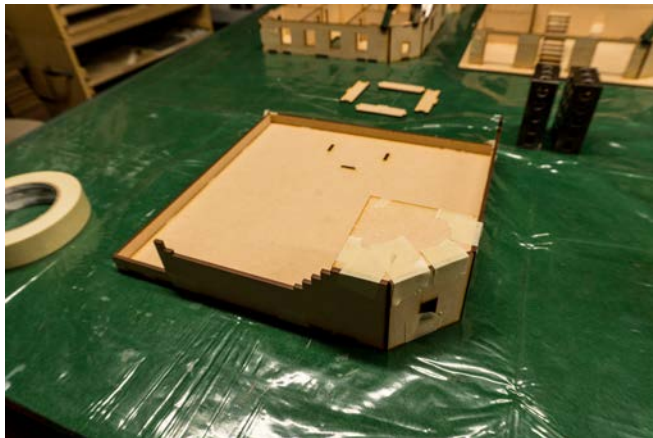
11. Assemble the two vertical pieces shown in the photo.

Step 11



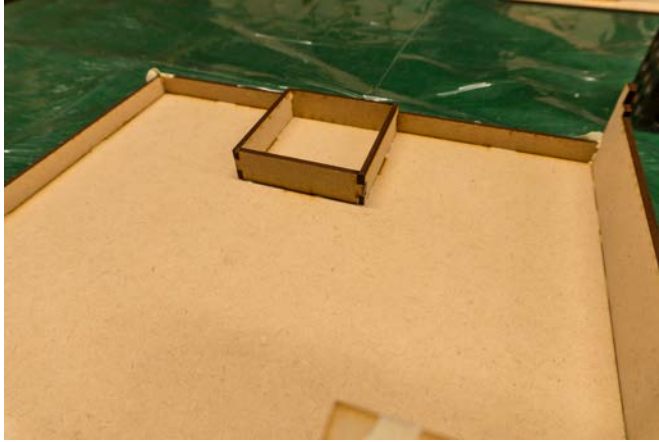
12. Assemble the vertical corner front piece as shown in the photo.

Step 12



13. Assemble all remaining roof sides.

Step 13



13. Assemble the small walled off area on the roof (we think this is where a sat dish would go).

Step 14



15. Layout the pieces for the sign and assemble as shown. Note: If you want the raised letters on the sign to be a different color, it would be wise to paint the parts separately and then assemble them.



Step 15

